



Dear Customer,

Quality has always been our driving force and founding Argon Audio is a natural extension of this philosophy.

We have 20 years' experience in creating and specifying high quality products, manufacturing them and selling them on to end users with **Value-for-Money** as the primary aim. And Argon Audio is a brand fully compliant with these values.

Design, and engineering is done in Denmark and manufacturing takes place in the Far East, where quality vendors are highly competitive - and as a result supply outstanding **Value-for-Money** products.

- To the delight of both ourselves and our customers!

Congratulations with your FORTE speakers, may they bring years of enjoyment.

Table of Content

1 Introduction	page 1
1.1 Contents of the box	page 2
1.2 Safety Instructions	page 3
2 Usage, controls and connections	page 4
2.1 Overview of the Back panel	page 4
2.2 Overview of the Remote	page 5
3 Quick Start	page 6
4 Special Functions and Features	page 7
5 Connecting a Chromecast Audio device	page 8
6 Specifications	page 9

1.1 Contents of the box;

- ARGON AUDIO FORTE Speakers
- Front covers with magnet mount
- Quick Start Guide
- Power cable
- Speaker cable (3 meters; 5 meters for FORTE A55)
- Remote control w/batteries
- Foam plugs for bass management (only FORTE A55)

We recommend that you keep the original box and packing material for future transportation.

We also recommend that you keep this User Manual for future use.

1.2 Safety Instructions



- Unplug this product from the wall outlet before cleaning. Do not use this product near water or moisture. Do not spill liquids on the product. Clean only with a dry cloth.
- Place the unit on a solid surface.
- Do not put it in a closed bookcase or a cabinet that may keep air from flowing through its ventilation openings.
- Do not install near any heat sources, such as radiators, heat registers, stoves or other appliances that produce heat.
- Protect the power cord from being walked on or pinched, particularly at plugs and the point where they exit from the product.
- During Lightning storms, unplug the product from the power source or if unused for long periods of time. This will prevent lightning and power-line surge damage to the product.
- Do not attempt to service this product yourself. Opening or removing covers may expose you to dangerous voltages or other hazards. Please contact the manufacturer to be referred to an authorized service center near you.
- Do not overload wall outlets, extension cords, or integral power circuits as this can result in a risk of fire or electric shock.
- Never push any object through the product openings, as this can result in fire, electric shock, or damage.
- Use proper power sources. Plug the product into a proper power source, as described in the operating instructions or as marked on the product.



If there is a Lightning flash with an arrowhead on product, it's intended to alert the User of the presence of un-insulated "dangerous voltage" within the product, that might be of sufficient magnitude to constitute a risk of electric shock to persons.



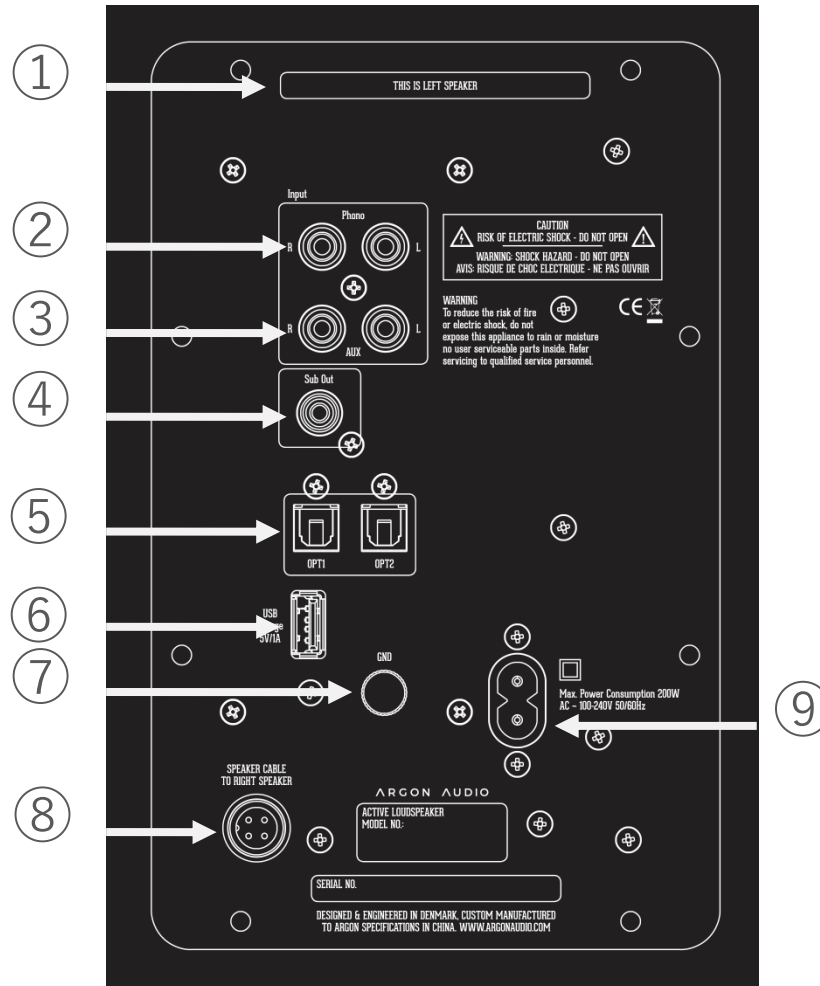
If there is an Exclamation point on the product, it's intended to alert the User that there is important operating and maintenance (servicing) information in the User manual.



If there is a double rectangular symbol on the product, it means that the product is double insulated. Earth connection is not required.

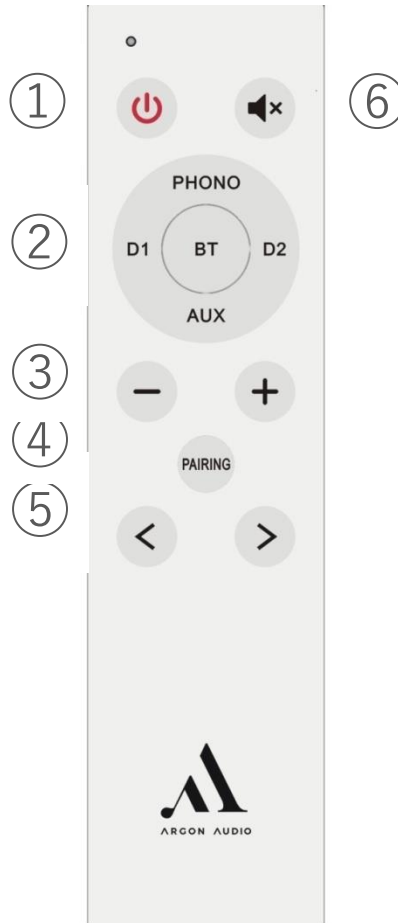
2. Usage, controls and connections

2.1 Overview of Back panel (inputs and connections)



1. Bass Reflex Port
 - ◇ Do not cover this port and preferably keep it min. 15 cm from a wall
2. Phono (MM) for turntable only
 - ◇ Connect a turntable, remember to connect “Ground” (⑦) as well
3. Line in for analogue sources (AUX)
 - ◇ Connect any analogue audio source with Left Right cable
4. SUB OUT
 - ◇ Connect a Subwoofer to this output
5. Optical/Digital 1 and 2
6. USB power
 - ◇ Charge any 5V USB device or Connect power to a Chromecast device. (see point 5 on page 8)
7. Ground (GND)
 - ◇ Connection for turntable grounding
8. Speaker plug
 - ◇ Connection cable to passive speaker
9. Power Plug
 - ◇ Insert the power cable and connect to an electric outlet

2.2 Overview of Remote control (functions)



1. Power ON/OFF
 - ◇ Press to turn power on or off
2. Input selector
 - ◇ Press to choose your desired input source
3. Volume up/down
 - ◇ Press to adjust volume up or down
4. Pairing of Bluetooth device
 - ◇ Press to pair a new Bluetooth device
5. Skip track in Bluetooth mode
 - ◇ Press to skip track forward or backwards
6. Mute or un-mute the sound
 - ◇ Press to Mute or un-mute the sound

3. Quick start

1. Connect the speakers using the supplied speaker cable.
2. Connect the power cord into an electric outlet and into the back of the left speaker (which has the amplifier). The LED light on the loudspeaker will turn on.
3. To pair your Bluetooth device, turn on the speakers and press and hold "PAIRING" on your remote for about 3 seconds, until the LED starts blinking. Your speakers are now in pairing mode. Activate Bluetooth on your playback device and scan for devices. Your speaker will show up as "ARGON FORTE". Press "pair" and you are connected. The LED light on the speaker will change to solid blue. You're now ready to start listening to music!
4. Besides Bluetooth, your Forte speakers have four more inputs: Optical1, Optical2, AUX and Phono. Use the included remote control to select your wished input.
5. When connecting a turntable to the Phono input on the Forte speaker, remember to also connect the ground wire from the turntable, to the metal GND screw.
6. If you have an active subwoofer, connect it to the Forte speaker's SUB OUTPUT, using a RCA cable and then connect the cable to Your Subwoofer.
7. Your FORTE speakers support most Samsung, Sony and LG remote functions for "Volume +/-" and "Mute" using IR remotes only.
8. We recommend a running-in time of your FORTE speakers of approximately 15-20 hours at normal listening level before you decide on the final positioning of the speakers. During the running-in time the drive units will settle in and perform as intended.
9. For optimal sound performance, the best listening position is at ear level with the speakers placed not too far from a wall.
10. For FORTE A55, notice that the speaker foot can be demounted if you wish so, and be replaced by ex. spikes

4. Special functions and features

1. Remote control function with Samsung, Sony and Denon remotes
 - ◇ Argon FORTE is born with IR commands from the most common Sony and Samsung TV. That is, you can use your Sony or Samsung IR remote control for completely basic commands such as: **volume up, volume down and mute** on the FORTE.
 - ◇ If you have a remote control that does not send IR commands (for example a Smart remote), some newer TVs also support IR learning, so you can force the television to broadcast IR commands to your product, thus using your TV remote control to control your FORTE. For this, we recommend finding the DENON AVR X1400 in the list under devices on your TV to use this feature. Check the manual for your TV if in doubt.
2. Auto sense (APU Auto Power Up)
 - ◇ When in standby mode, FORTE will by default start up automatically once you start playing music from your source (notice, there is No Auto sense on Phono/Turntable input)
 - ◇ Bluetooth will Auto connect to already paired devices.
 - ◇ You can turn the Auto sense OFF if you wish. Press and hold the Power button on the remote for 5 sec. and the FORTE's APU is disabled. When FORTE is powered on again it works normal again with APU function.
 - ◇ If you do not want auto sense on the inputs at any time, you should always power the amplifier off manually with the remote (and hold the power button for 5 seconds when doing so)
3. Auto standby (APD Auto Power Down)
 - ◇ The FORTE will automatically go into standby after 15 minutes if no music is playing.
 - ◇ Timeout for Bluetooth connection loss with Bluetooth device is also 15 minutes
4. Un-Pair Bluetooth devices
 - ◇ Press and hold PARRING for 5 sec – light will flash and unpair/reset is done.

5. Connecting a Chromecast Audio device

Your Argon Forte speakers can easily be turned into a WiFi streaming speakers, simply by adding a Google Chromecast Audio adapter. Read more about Chromecast Audio [here](#)

For connecting a Chromecast Audio device to Argon Forte speakers you have two choices.

- ◇ Connecting the Chromecast Audio **using USB power Forte** (point 2.2.6 page 4)
 - ◇ Chromecast must be connected to optical input (point 2.2.5 page 5).
A cable for this kind of connection is not included with the Chromecast. The cable needed is called Optical mini / Toslink digital and will look like below.
Using this digital cable is the optimal sound quality solution.



- ◇ Connecting the Chromecast Audio **using normal power outlet** to power the Chromecast.
 - ◇ Chromecast must be connected to Line In (point 2.2.3 page 4). A cable for this kind of connection is not included with the Chromecast. The cable needed is called Mini Jack to RCA cable and will look like below



6. Specifications

- ◇ 2 way Active speaker system with build in 4 channel Class-D Amplifier
- ◇ Bass reflex system
- ◇ Power 8 ohm: 2 x 80 watt RMS
- ◇ Frequency range:
 - ◇ Forte A4 50-20.000 Hz (± 3 dB)
 - ◇ Forte A5 40-20.000 Hz (± 3 dB)
 - ◇ Forte A55 35-20.000 Hz (± 3 dB)
- ◇ Tweeter: 1" soft dome with neodym magnet
- ◇ Bass/midrange driver:
 - ◇ Forte A4 4" Bass /midrange driver
 - ◇ Forte A5 5" Bass/midrange driver
 - ◇ Forte A55 2x5" Bass/midrange driver
- ◇ Energi usage in standby: <0,5 watt

- ◇ **Inputs** : 2 x optical digital, L/R analog stereo-in (RCA), Turntable MM input, wireless Bluetooth aptX, Low Latency and AAC
- ◇ **Outputs**: SUB out for subwoofer, 5V USB-output (ex. for Chromecast Audio or charge for Smartphone)

- ◇ Bluetooth-function with Qualcomm aptX and AAC
- ◇ Auto power on/off on inputs incl. Bluetooth, (notice; Auto power on does not work on turntable input)
- ◇ Magnetic front cover

- ◇ Size:
 - (1) FORTE A4 14,3 x 24,0 x 29 cm (WxHxD)
 - (2) FORTE A5 16,5 x 27,0 x 23,0 cm (WxHxD)
 - (3) FORTE A55 15,6 x 85,0 x 25,0 cm (WxHxD)
- ◇ Weight :
 - ◇ FORTE A4 6,7 kg (set)
 - ◇ FORTE A5 8,2 kg (set)
 - ◇ FORTE A55 26 kg (set)
- ◇ Colors: Black matt paint (Bronze trim ring), White matt paint (Silver trim ring)